







# BRAND

WHO WE ARE

Numerology attests that number 3 is synonymous with creation and creativity, motto for the creation of the Portuguese brand 'Paulo Antunes'. Simplicity, elegance and sophistication are the 'trilogy' which inspires every detail of our models.

The collections try to perpetuate the values of global sustainability: closeness to nature, balance, freedom and, above all, authenticity. The articulation between the handmade, the ancestral techniques and the design, sine qua non condition in every item, results in an excellent harmony and balance of the items.

The assumed positioning is high-end, directed to both genders, over 30 years old, hedonists, urban and knowledgeable people, who try to live in accordance with individual thinking and authenticity. Light and transparency combined with open mindedness, act as inspiring muses creating a furniture and upholstery collection that celebrates tradition, design and comfort. The purity of forms contributes for the greatness of certain pieces, magnifying the essence of what's really important, reaching the point of making everything that is around the focus of creation dispensable.

SINCE  
**2000**





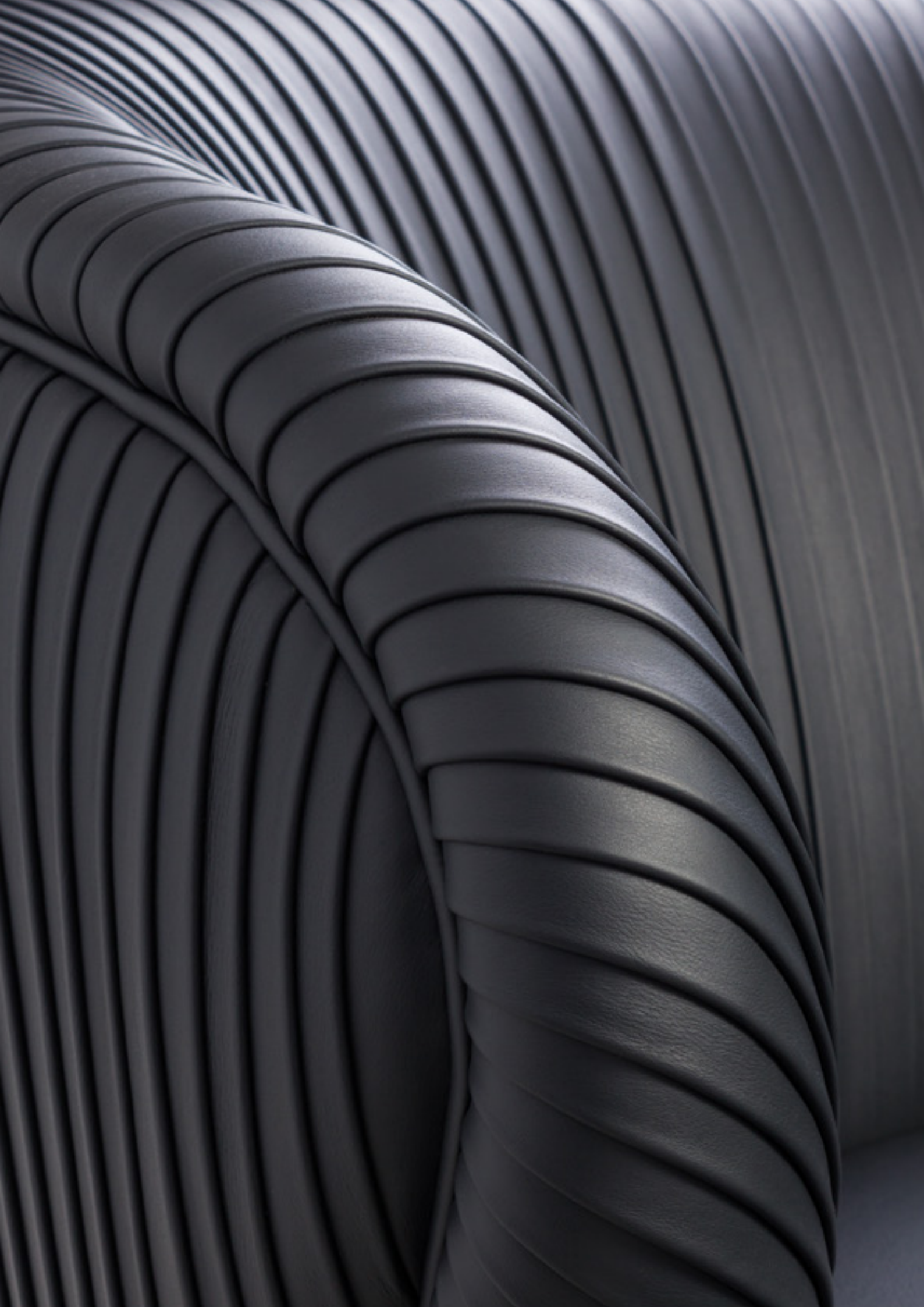
## INDEX

04	ARMCHAIRS
30	CHAIRS
72	SOFAS
94	CHAISE LONGUE
104	FURNITURE
152	POUFS & BENCHES
158	BAR STOOLS
162	TECHNICAL INFORMATION



## ARMCHAIRS





# ALFAMA

COLLECTION



## ALFAMA

Inspired by the pleated skirts of the seventies, the ALFAMA armchair is, undoubtedly, the maximum exponent of sophistication. Its dimensions enhance comfort and its shape, although delicate, creates impact. It can be said that this item is almost a piece of art, not only by the fact that it is all hand-made, but also by the materials which are applied on it.

w 89cm d 80cm h 80cm sh 45cm



# ALMA

COLLECTION



## ALMA

One of the stars of our collection, a supreme of the hand work in leather. This piece is all about leather and stitching, using a classy pattern on the back and a simple pattern on the cushion.

A simple structure that is complemented with the purity and sophistication of the leather.

w 68cm d 70cm h 78cm sh 42cm







# ASPEN

COLLECTION



## ASPEN

The ASPEN armchair is an item which unites aesthetics and comfort, enhancing its design with lines which bring us to a more traditional design.

w 73cm d 79cm h 86cm sh 45cm



# BLOW

COLLECTION



## BLOW

The straight lines from the BLOW armchair, transmits an accuracy almost mathematical, as well as an unequalled stability. On the other hand, the curved lines transmit the idea of freedom and informality, making it dynamic, sophisticated and with movement.

w 110cm d 84cm h 71cm sh 40cm





# CHARLES

COLLECTION



## CHARLES

The CHARLES armchair is the continuation of charles sofa, which is irreproachable as far as its lines are concerned, becoming a prominent element in an atmosphere ruled by straight lines. This armchair is the perfect complement in the quest for a sophisticated and singular atmosphere.

w 79cm d 80cm h 96cm sh 45cm





# DAKAR

BASIC



## DAKAR

Dakar is a stylish statement piece that fuses modern chic with sophistication. With its soft sweeping form and elegant features, Dakar serves as an ideal conversation piece. As versatile as it is timeless.

w 81cm d 83cm h 75cm sh 45cm







# DELANO

COLLECTION



## DELANO

Classic model with the magnificence of the capitoné and the lines of antique furniture style. The Delano feet could be lacquered, in Beech or Ash natural color or stained.

w 87cm d 86cm h 105cm sh 47cm



# DOMOVE

BASIC



## DOMOVE

DOMOVE armchair befitting the classic and contemporary lifestyle. The seat base and back provides supreme levels comfort and luxury.

w 67cm d 73cm h 76cm sh 44cm





# ESTOCOLMO

BASIC



## ESTOCOLMO

The ESTOCOLMO armchair, as its name suggests, is the representation of the minimalism and sophistication of the Scandinavian trends, combining traditional details with the modernism present in this sofa. The nature's inspiration is seen, as well, in the way the wood is finished, making it one of the most special items of the collection.

w 86cm d 89cm h 82cm sh 47cm





# FADO

COLLECTION



## FADO

This is an updated version of the capitonné legacy, being available in fabric or leather. The design of this armchair unites esthetics and comfort, which maximizes its functionality. It is, as well, a handmade item, being considered the haute-couture of upholstered items.

w 87cm d 80cm h 80cm sh 45cm







# OSLO

BASIC



## OSLO

The Oslo armchair was designed to provide the maximum comfort and sophistication to all kind of atmosphere. This armchair is the right definition of "cosy", joining comfort to elegance

w 71cm d 78cm h 119cm sh 47cm



# SERENE

COLLECTION



## SERENE

Determined by the same geometry of this line, as well as by a harmonious connection between its elements. The fabric color possibilities are endless.

w 85cm d 80cm h 83cm sh 44cm



## CHAIRS





# AGATA

BASIC



## AGATA

The AGATA chair refers to the well-known Agate gemstone found for the first time in Sicily, Italy. They say that the bearer of the stone is protected against evil and diseases. This chair may not bring these benefits but in a matter of comfort and quality is one of a kind. A unique and indispensable item in any dining room.

w 53cm d 59cm h 81cm sh 47cm







# ALICANTE

BASIC



## ALICANTE

The ALICANTE chair is a simple and functional model to any dining or living room, able to be lacquered, in beech or ash natural color or stained.

w 60cm d 62cm h 83cm sh 48cm



# ANTHONY

COLLECTION



## ANTHONY

The chair ANTHONY is the portrayal of an item where the classical details are present, but where the freedom of its lines makes it peaceful, balanced and of an enormous sophistication. The fact that its back is partially fixed to the structure, makes it bold and fluid as far as its profile is concerned.

w 56cm d 58cm h 80cm sh 47cm





# ANTHONY

COLLECTION



## ANTHONY

The ANTHONY armchair is the portrayal of an item where the classical details are present, but where the freedom of its lines makes it peaceful, balanced and of an enormous sophistication. The fact that its back is partially fixed to the structure, makes it bold and fluid as far as its profile is concerned.

w 63cm d 60cm h 80cm sh 48cm





# BEIRUT

BASIC



## BEIRUT

The swooping silhouette of the beirute dining chair is defined by its subtle rounded detail and sleek show wood frame. This versatile piece is an elegant addition to a variety of dining spaces and its curved shape and high back allows for optimum comfort.

w 49cm d 63cm h 87cm sh 47cm



# BOND

COLLECTION



## BOND

The BOND chair is an item of sinuous lines, which allows the right interaction with any kind of space. In it, we can see the boldness of its lines, but also the scandinavian touch, which makes it a unique and exceptional piece.

w 66cm d 62cm h 78cm sh 46cm





# BRAGA

BASIC



## BRAGA

As the city named Braga this chair is inspired by the classic office chairs, with a lighter approach and basic geometric lines. Made up of a structural element that combines great visual lightness with extreme sturdiness.

w 59cm d 50cm h 76cm sh 47cm





# CUNHA

BASIC



## CUNHA

A chair of minimal lines able to be used in very different contexts, able to be lacquered, in Beech or Ash natural color or stained.

w 48cm d 53cm h 98cm sh 48cm



# ELLE

COLLECTION



## ELLE

ELLE is a dining chair with a soft rounded back. Sumptuous layers of padding ensure a comfortable and relaxing dining experience.

w 53cm d 60cm h 96cm sh 47cm





# GRACE

COLLECTION



## GRACE

A timeless chair with soft curves inspired by the feminine and rattan straws that provides strenght and lightness to the piece.

w 60cm d 60cm h 83cm sh 44cm





# GRACE

COLLECTION



## GRACE

A timeless chair with soft curves inspired by the feminine and rattan straws that provides strenght and lightness to the piece.

w 60cm d 60cm h 83cm sh 44cm



# HAMBURGO

BASIC



## HAMBURGO

Dynamic and functional model to sit and relax at any dining or living room, able to be lacquered, in Beech or Ash natural color or stained.

w 57cm d 65cm h 85cm sh 47cm





# LOUISE

COLLECTION



## LOUISE

Louise is a charming dining chair with timeless appeal. A must have piece for the contemporary design enthusiast. Sumptuous layers of padding ensure optimal levels of comfort.

w 52cm d 57cm h 85cm sh 49cm



# MÁXIMA

BASIC



## MÁXIMA

Modern looking with beautiful curved lines. A very comfortable chair which the feet could be lacquered, in Beech or Ash natural color or stained.

w 58cm d 56cm h 89cm sh 47cm





# PARIS

BASIC



## PARIS

This chair exudes antique elegance, with contemporary style. This elegant chair sits well within both the commercial and domestic environment.

w 50cm d 55cm h 95cm sh 48cm



# PARIS

BASIC



## PARIS

This chair exudes antique elegance, with contemporary style. This elegant chair sits well within both the commercial and domestic environment.

w 54cm d 55cm h 95cm sh 48cm





# PORTO

BASIC



## PORTO

Porto is a dining chair with a contemporary appeal. Its comfortable striking shape ensure an enjoyable sit and an elevated dining experience. This chic chair sits well within both the commercial and domestic environment.

w 49cm d 59cm h 87cm sh 48cm





# SUZY

COLLECTION



## SUZY

The Suzi chair is the perfect fusion of balance and harmony, where there is an intersection of straight and curved lines, becoming an ex-libris of 'North' Collection, also thanks to its timelessness.

w 50cm d 59cm h 87cm sh 47cm





# THOMAS

COLLECTION



## THOMAS

The chair THOMAS is a timeless model, with straight lines, taking us to a design of most sophistication and comfort.

w 62cm d 57cm h 80cm sh 47cm



# YORK

COLLECTION



## YORK

The chair YORK was inspired in the well known city in the UK, York a city known by its rich heritage and historic attractions. Like the city this chair delivers a perfect example of craftsmanship and history by using the same types of materials used for centuries. This chair being handmade makes it timeless and perfect in every environment in which is placed.

w 56cm d 61cm h 77cm sh 47cm





## SOFAS





# ASPEN

COLLECTION



## ASPEN

The ASPEN Sofa is synonymous of strength and perseverance concerning its design, taking us on a journey to the past, thanks to its features. Its upholstery, presenting special details, makes every atmosphere elegant and distinct.

w 152cm d 78cm h 86cm sh 46cm





# BLOW

COLLECTION



## BLOW

The straight lines from the BLOW sofa, transmits an accuracy almost mathematical, as well as an unequalled stability. On the other hand, the curved lines transmit the idea of freedom and informality, making it dynamic, sophisticated and with movement.

w 235cm d 84cm h 71cm sh 40cm





# CAMPUS

BASIC



## CAMPUS

One of the most luxurious and comfortable of our sofas, Campus was designed to impress,, with the innovative reclining movement, for maximum comfort.

w 240cm d 100cm h 73cm sh 45cm





# CHESTER

BASIC



## CHESTER

The chester sofa is a timeless model, with a unexceptionable capitoné, taking us to a design of most sophistication and comfort.

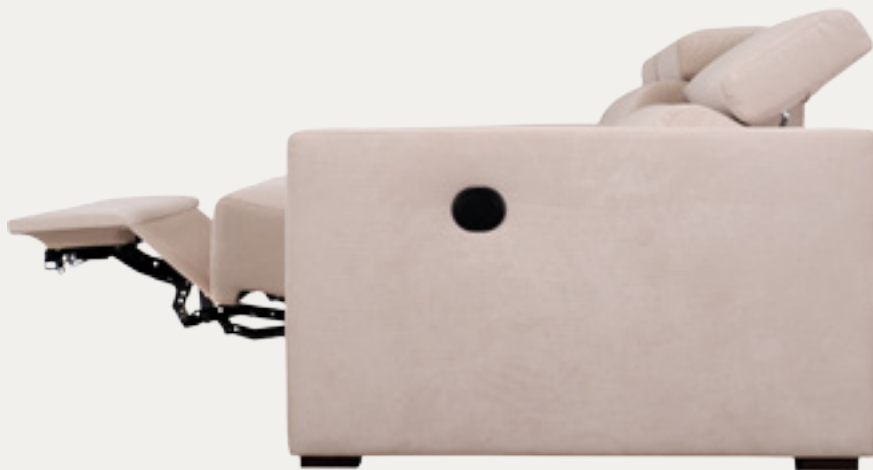
w 200cm d 90cm h 72cm sh 45cm





# COHEN

BASIC



## COHEN

COHEN is designed by the form and function, fusing contemporary with comfort. A must have piece for design purists.

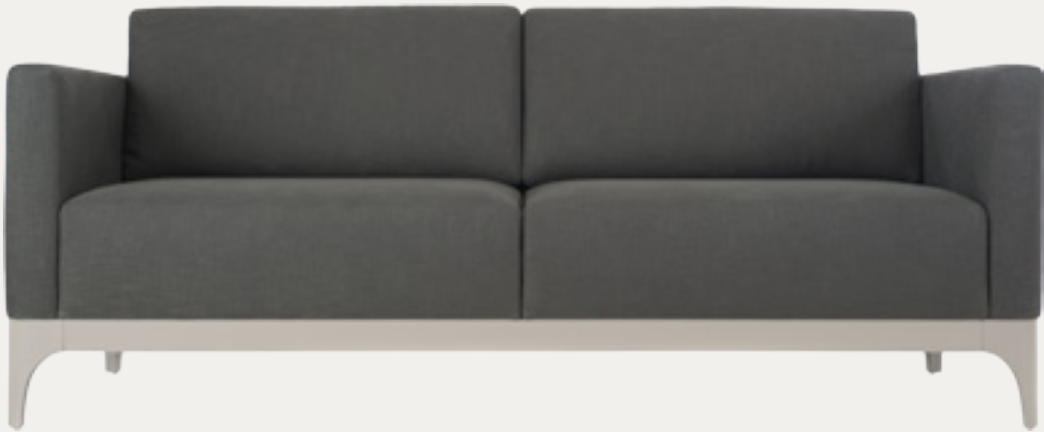
w 284cm d 102cm h 80cm sh 45cm





# ESTOCOLMO

BASIC



## ESTOCOLMO

The ESTOCOLMO sofa, as its name suggests, is the representation of the minimalism and sophistication of the Scandinavian trends, combining traditional details with the modernism present in this sofa. The nature's inspiration is seen, as well, in the way the wood is finished, making it one of the most special items of the collection.

w 195cm d 89cm h 82cm sh 45cm





# FADO

COLLECTION



## FADO

This is an updated version of the capitonné legacy, being available in fabric or leather. The design of this sofa unites esthetics and comfort, which maximizes its functionality. It is, as well, a handmade item, being considered the haute-couture of upholstered items.

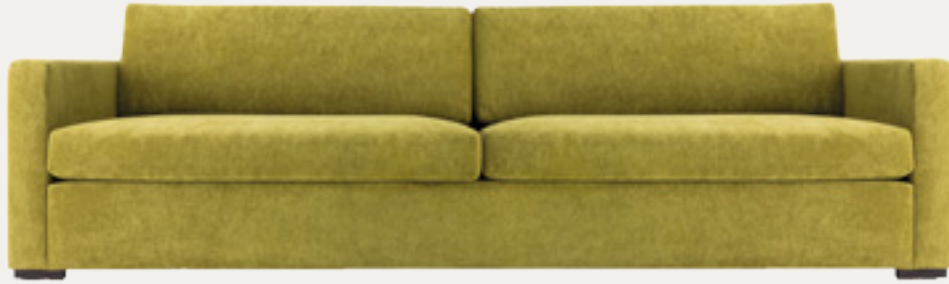
w 140cm d 80cm h 80cm sh 45cm





# MARVIN

BASIC



## MARVIN

Marvin sofa brings you an elegant Italian lounge style into your living room. High comfort and quality materials are perfectly combined with great design and stylish details.

w 280cm d 110cm h 80cm sh 43cm





# NICOLA

BASIC



## NICOLA

The NICOLA sofa stands out for its 'clean' and contemporary look, highlighted by its almost straight angles. It is an item which favours space and comfort, not forgetting its strong design which takes us to a minimalist pattern. Its strong structure tries to focus the basic of forms, appealing to its strenght.





# PLATEAUX

COLLECTION



## PLATEAUX

The design of the PLATEAUX sofa, associated to its strong and peculiar wood structure, makes this sofa one of the most comfortable items of the collection. The sobriety of the lines is broken by the minimalist details.

w 225cm d 90cm h 80cm sh 45cm



CHAISE LONGUE





# ASPEN

COLLECTION



## ASPEN

The traditional chaise-longue gives rise to the ASPEN chaise-longue, which combines its simple geometry with the delicacy of its back shape, making it eternal as far as its design, balance and confort are concerned.

w 144cm d 72cm h 83cm sh 43cm



# BARRICA

BASIC



## BARRICA

With attractive piping detail BARRICA is a classic design. With ability to carry traditional and contemporary fabrics, makes the model a favourite.

w 192cm d 78cm h 72cm sh 42cm





# CONRAD

BASIC



## CONRAD

Very practical and comfortable, a chaise longue that fits easily in any environment, able to be lacquered, in Beech or Ash natural color or stained.

w 159cm d 70cm h 66cm sh 45cm





# SERENE

COLLECTION



## SERENE

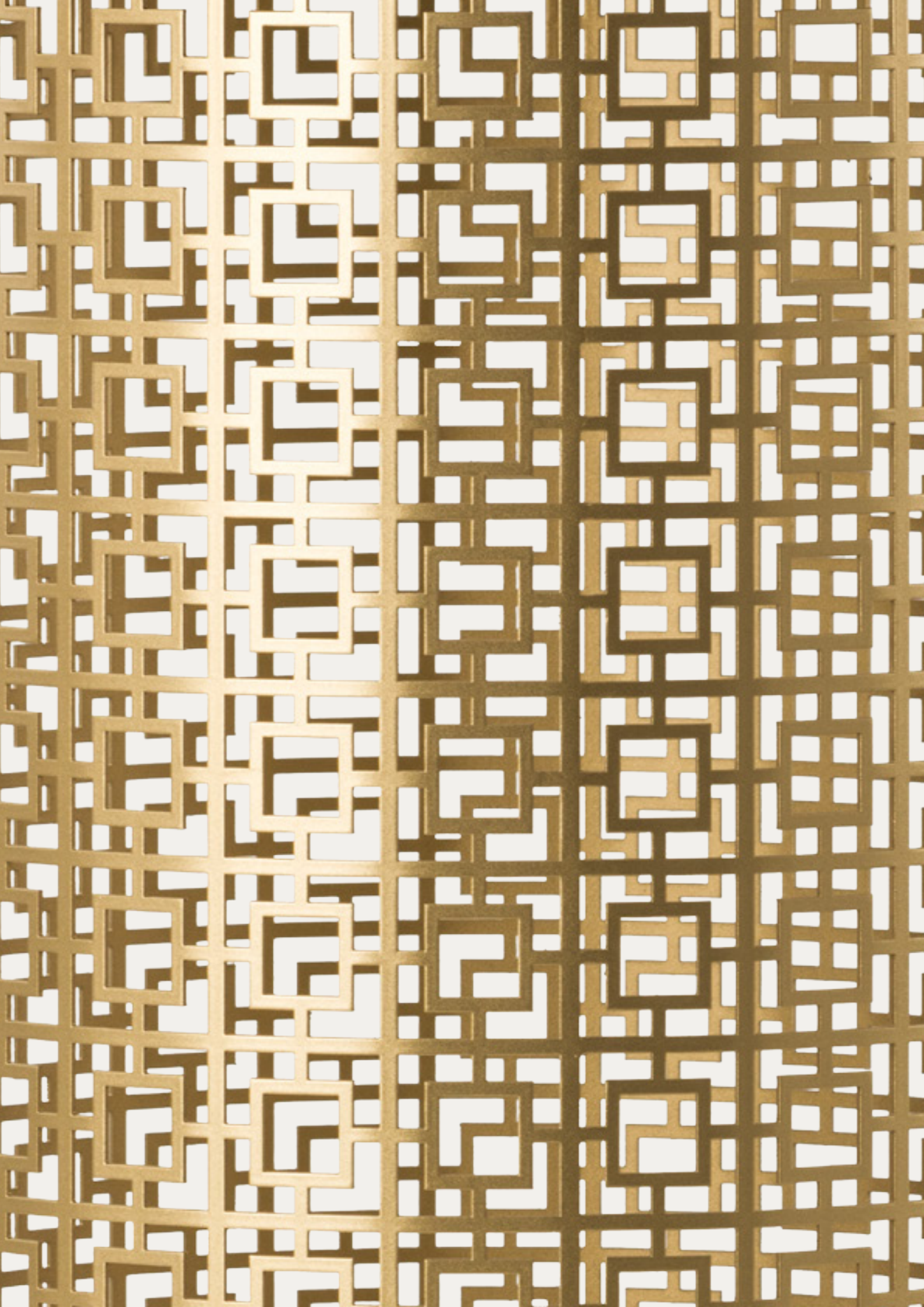
Characterized by its timeless and minimalist lines, either straight, or softly organic, with notes of sophistication, like its velvet, which take us to a deeply elegant piece of furniture.

w 172cm d 85cm h 84cm sh 44cm





# FURNITURE





# AFONSO

BASIC



## AFONSO

The AFONSO table is a side table which is distinguished by the way the metal is shaped, together with its circular shape, giving it a very singular personality.

w 38,5cm d 38,5cm h 58cm



# AMADEO

COLLECTION



## AMADEO

AMADEO is an elegant table that features an elegant design base which gives movement sensation, bringing modern style to your living or dining space.

w 50cm d 50cm h 41cm





# BEE

COLLECTION



## BEE

Honey 'n' bees. This lovely combo in ebony macassar, results in this sideboard, designed for creative and kind people.

w 80cm d 40cm h 90cm







# BEE

COLLECTION



## BEE

Honey 'n' bees. This lovely combo in olivato root, results in this sideboard, designed for creative and kind people.

w 80cm d 40cm h 90cm



# BLOW

COLLECTION



## BLOW

Inspired in the same line of the sofa, this lamp joins the straight lines and the curvature in the superior part, making it a strong item. It could be produced in Walnut, Ebony and Olivato Root.

w 51cm d 51cm h 150cm





# BOARD

COLLECTION



## BOARD

The BOARD tables are another Nordic-inspired item, thanks to the simplistic design, taking us to the natural element of life. Its functionality is maximized, since its Ash top is a removable plate from the lacquered metal structure.

w 80cm d 80cm h 45cm





# CROWN

COLLECTION



## CROWN

The CROWN table, as the name suggests, is the personification of a crown. This table, due to the complexity of its handmade structure in solid Ash wood, makes it one of the stars of Collection. Its complexity and robustness makes it strongly elegant. The contrast of the opened design and the robustness of the Ash makes it strongly elegant.

w 100cm d 100cm h 41cm



# FRANK

COLLECTION



## FRANK

The FRANK mirror is another irreverent item of 'North Collection', which reminds us of one paper glued to the wall. It is perfect for creative environments and, of course, creative people with innovative minds.

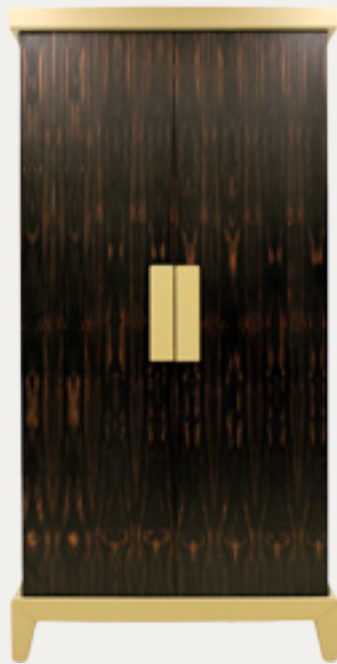
w 120cm d 6cm h 148cm





# GRANDE

COLLECTION

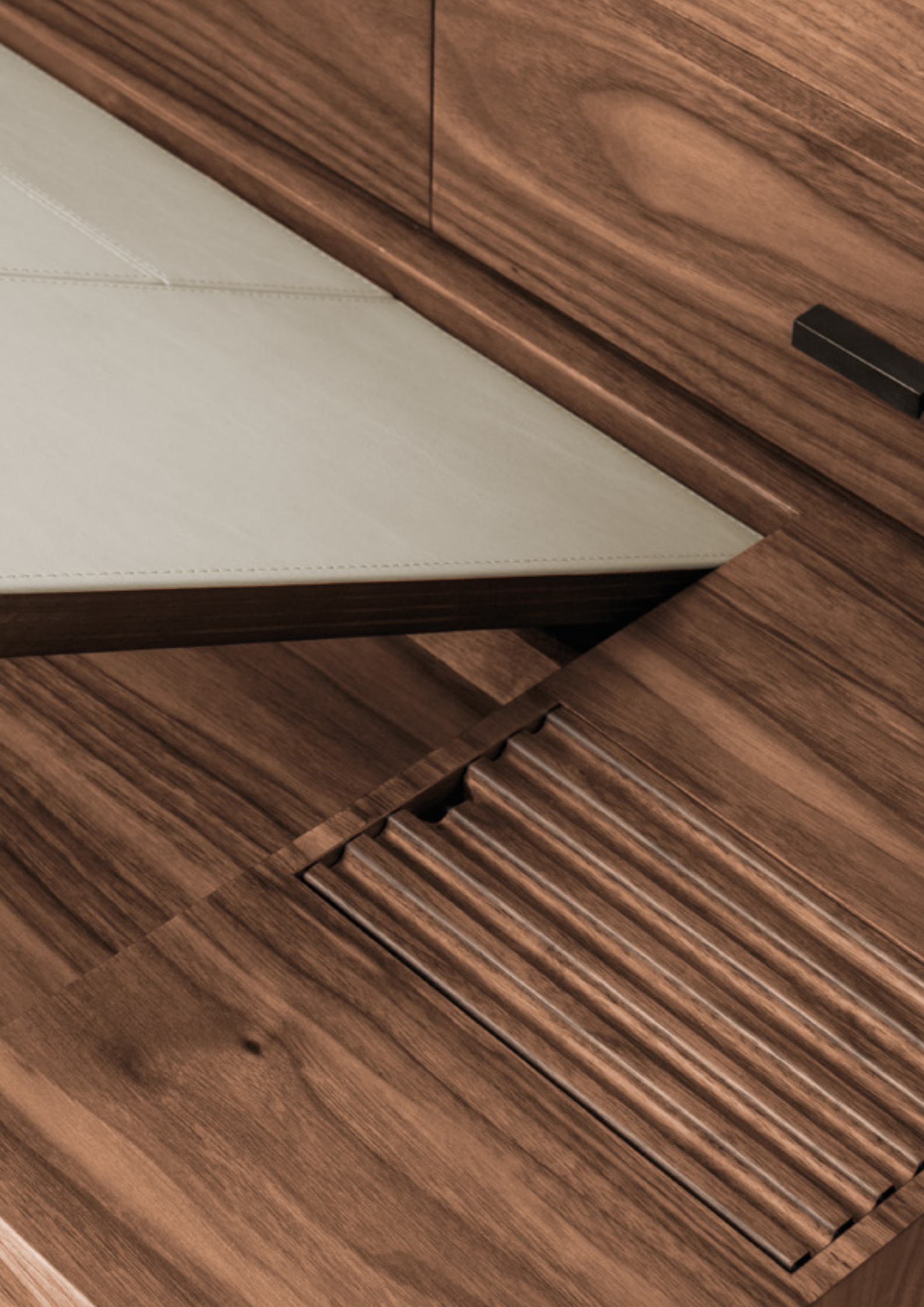


## GRANDE

The GRANDE wardrobe is an item of great versatility, fitting perfectly any kind of atmosphere, also thanks to its organic lines. The application of leather with stitching at its base and top, make it specially elegant and notable.

w 107cm d 54cm h 210cm







# HEMINGWAY

COLLECTION



## HEMINGWAY

The HEMINGWAY desk will make you want to work, study and, most likely, create. The detail in leather is just the necessary complement.

w 140cm d 70cm h 88cm





# JULIETTE

COLLECTION

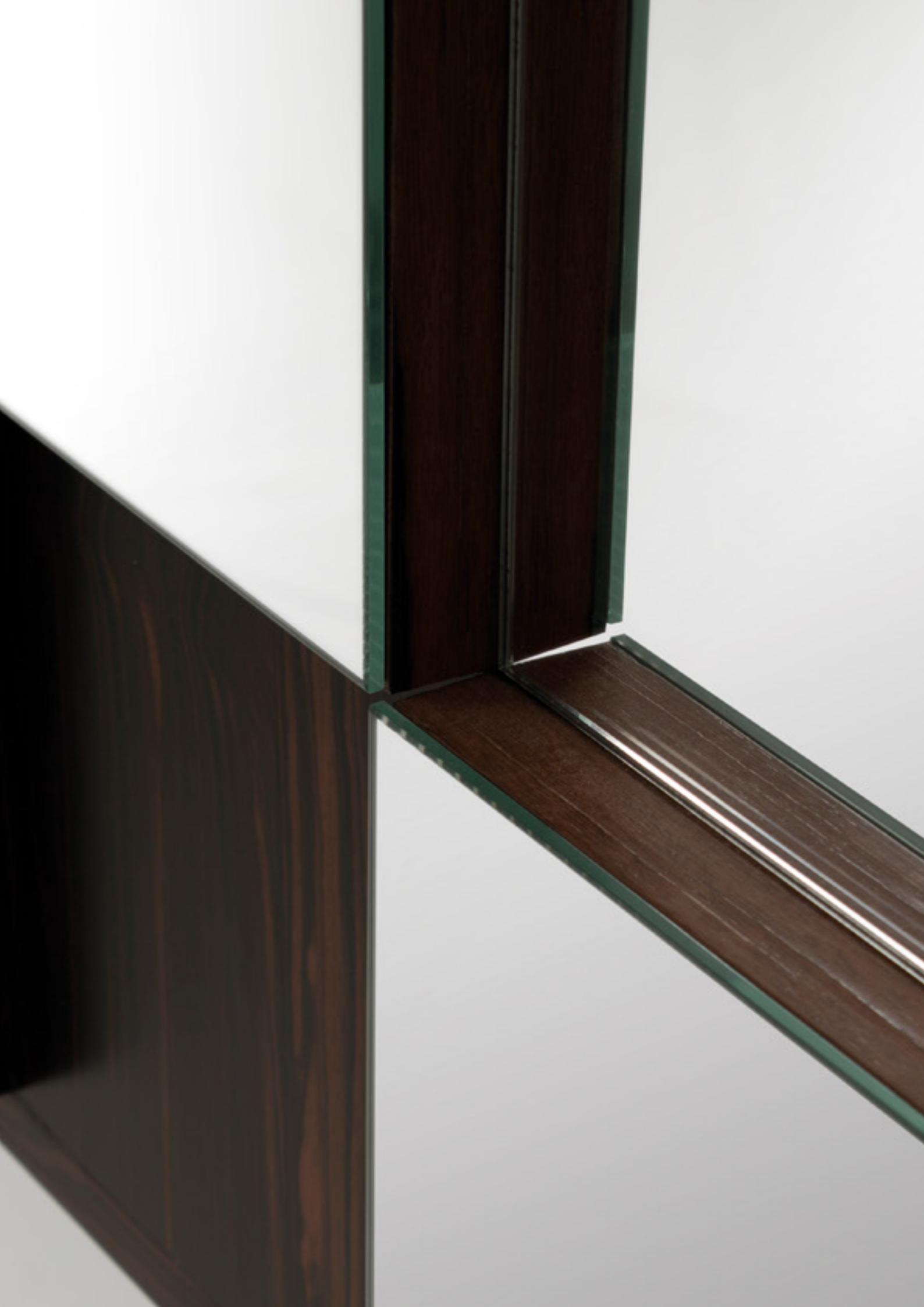


## JULIETTE

Novelty where the cane is present, giving it a unique personality. Produced in Walnut or Ash, this screen is a timeless piece. The swivel panels with Cane make it perfect to suit in any space.

w 210cm d 5,5cm h 180cm





# KUBIC

COLLECTION



## KUBIC

The KUBIC mirror is the consequence of the inspiration on the three-dimensional effect. As its name suggests, this mirror is composed by several cubes, some more protruding than others, in which four of them, veneered, have the same thickness as the frame itself. The result is an unequal and exclusive mirror.

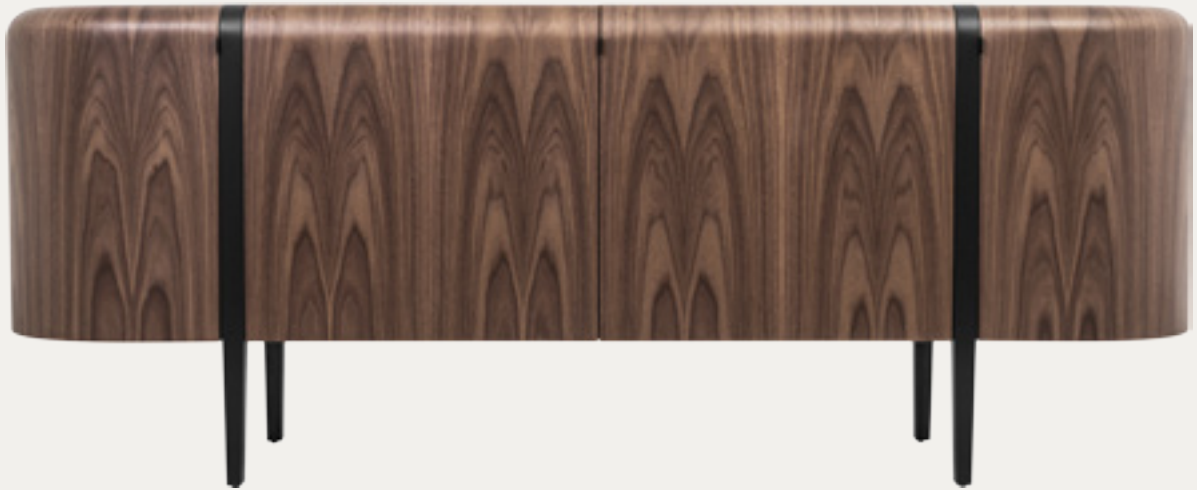
w 183cm d 10cm h 84cm





# LOLA

COLLECTION



## LOLA

In walnut and lacquered feet, this sideboard is one of the most remarkable items of Paulo Antunes collections. Having a classic inspiration, it takes us to the sixties, displaying details of modernism, like its straight feet lacquered in black, giving it a unique touch and contrast

w 220cm d 52cm h 86cm



# MARBELLA

COLLECTION



## MARBELLA

Introducing the combination of chrome base and black lacquered, these stylish and unique coffee and side tables are part of our collection. Great for a real contemporary and modern look, it will help your room look outstanding.

w 53cm d 53cm h 54cm





# ORIENTAL

COLLECTION



## ORIENTAL

The ORIENTAL Console in Macassar ebony and covered in leather is considered the exponent of elegance, also thanks to its noble materials. We have to make a special reference to the wood which composes this item, ebony Macassar which, thanks to its beauty, makes every atmosphere sophisticated.

w 161cm d 41cm h 96cm





# OTTO

BASIC



## OTTO

This modern Otto table features a metal lacquered base in black and circular or oval nogal wood top. This table is the perfect example of Paulo Antunes philosophy of utilising two different materials to create a unique and distinctive design.

w 200cm d 110cm h 75cm



# OTTO

BASIC



## OTTO

This modern Otto table features a metal lacquered base in black and circular or oval nogal wood top. This table is the perfect example of Paulo Antunes philosophy of utilising two different materials to create a unique and distinctive design.

w 125cm d 125cm h 75cm





# PENCIL

COLLECTION



## PENCIL

The table in Oak and the bench in Oak and lacquered, are inspired on the format of a pencil.

It is a very strong item, making every atmosphere singular and less formal.

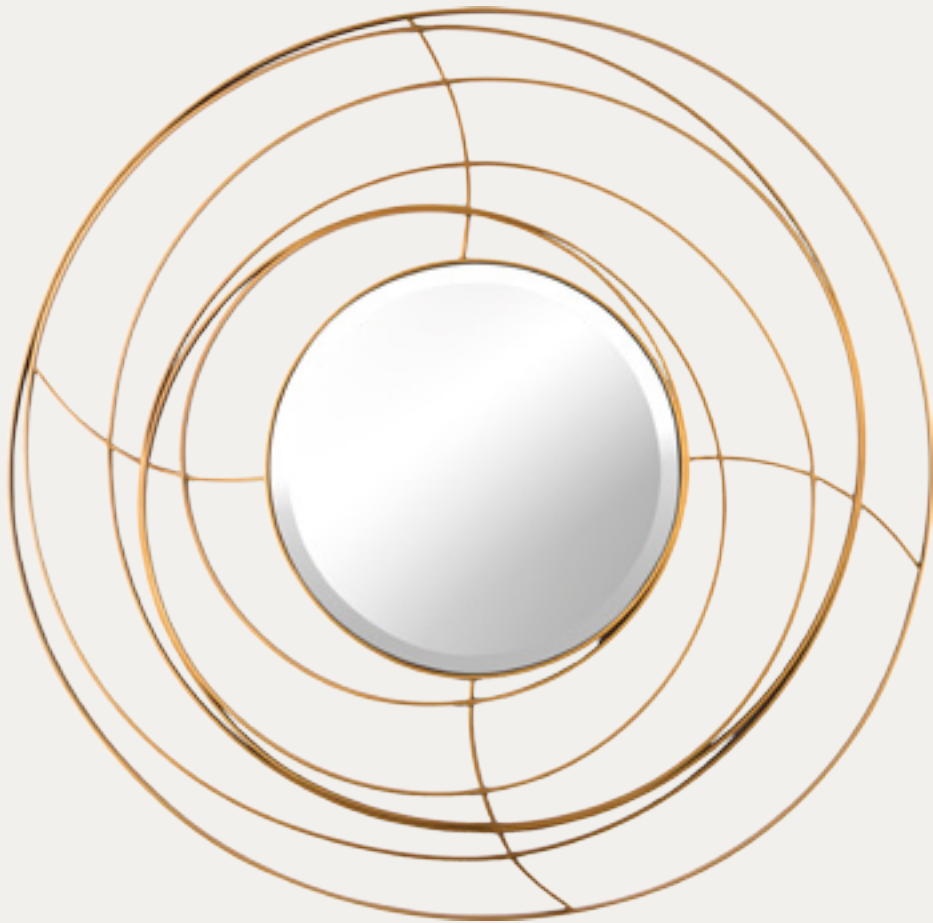
w 60cm d 60cm h 40cm





# ROSE

COLLECTION



## ROSE

A metal lacquered frame with bronze mirror, inspired on a rosebud, the reason why it is completely asymmetric, where the curve lines prevail. It is one of the most remarkable items of Collection, thanks to its particularity and exclusivity.

w 110cm d 4cm h 110cm



# SHELL

COLLECTION



## SHELL

In terms of design, this is probably one of the simplest items of Collection. Nevertheless, its simple lines, along with its materials, Black Marble or Ash wood, make it a very detailed, elegant and strong item.

w 39cm d 15cm h 36cm





# SHELL

COLLECTION



## SHELL

In terms of design, this is probably one of the simplest items of Collection. Nevertheless, its simple lines, along with its materials, Black Marble or Ash wood, make it a very detailed, elegant and strong item.

w 37cm d 13cm h 36cm





# TEXTURE

COLLECTION



## TEXTURE

The TEXTURE Sideboard is an item with a considerable height, taking us to the seventies in terms of dimension, but with pure and sophisticated lines which characterize this last collection. It is handmade, accordingly to the brand values. Its structure is in solid chestnut, with a special handcrafted effect seen at the front and laterals. Each TEXTURE sideboard is unique, being all different. It is an exclusive item, thanks to its lines, its organic and its sophistication.

w 220cm d 53cm h 96cm



# TOWER

COLLECTION



## TOWER

Characterizable by the combination of bars with different heights and different materials, giving it an incomparable sensation of verticality and elegance. Its materials are noble, from the Walnut, to the brass, leather, golden leaf, etc.

w 35cm d 25cm h 74cm





## POUFS & BENCHES

# BLOW

COLLECTION



## BLOW

BLOW pouf was designed to provide the comfort and the same sophisticated lines this line has to offer. The metal support is a prominent element, making it highly elegant.

w 70cm d 74cm h 40cm sh 40cm



# JAPAN

COLLECTION



## JAPAN

This bench is a personification of a cork, being perceptible in the first few seconds. In Ash or Travertine, this is an item of pure lines, where the natural element is present.

w 30cm d 30cm h 40cm sh 40cm

# PENCIL

COLLECTION



## PENCIL

The table in Oak and the bench in Oak and lacquered, are inspired on the format of a pencil. It is a very strong item, making every atmosphere singular and less formal.

w 40cm d 40cm h 45cm sh 45cm

# SERENE

COLLECTION



## SERENE

The SERENE pouf is the perfect complement of this line, being usable in several ways, proving its versatility. It is synonymous of simplicity, harmony and sophistication.

w 66cm d 66cm h 44cm sh 44cm





## BAR STOOLS



# LOUISE

BASIC



## LOUISE

The LOUISE bar stool with curved back ensure maximum comfort while the solid beech wood frame and show wood finish exude quality and style. This stool sits well within both the commercial and domestic environment.

w 45cm d 53cm h 103cm sh 80cm

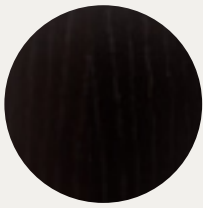




## TECHNICAL INFORMATION

## WOODS

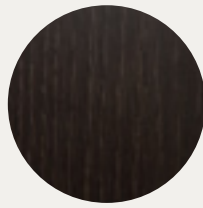
### WOODS & FINISHES



oak stained  
( cpa.w001.2017 )



oak stained  
( cpa.w002.2017 )



oak stained  
( cpa.w003.2017 )



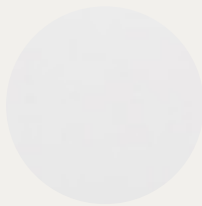
oak stained  
( cpa.w004.2017 )



oak stained  
( cpa.w005.2017 )



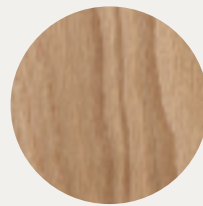
oak stained  
( cpa.w006.2017 )



oak stained  
( cpa.w007.2017 )



reconstituted oak  
( cpa.w008.2017 )



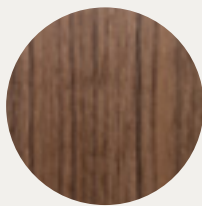
natural oak  
( cpa.w009.2017 )



natural ash  
( cpa.w010.2017 )



natural sycamore  
( cpa.w011.2017 )



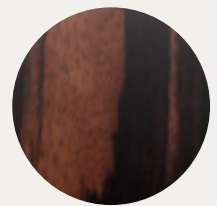
natural american walnut  
( cpa.w012.2017 )



natural beech  
( cpa.w013.2017 )



beech stained  
( cpa.w014.2017 )



natural macassar ebony  
( cpa.w015.2017 )



lacquered mother of pearl  
( cpa.w016.2017 )



aj finish  
( cpa.w017.2017 )



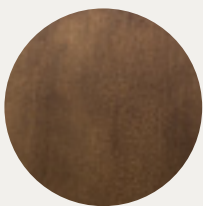
silver leaf  
( cpa.w018.2017 )



gold leaf  
( cpa.w019.2017 )



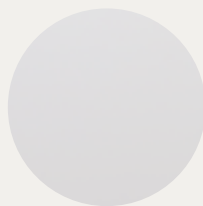
old gold leaf  
( cpa.w020.2017 )



bronze leaf  
( cpa.w021.2017 )



concrete finish  
( cpa.w022.2017 )



lacquered  
( cpa.w023.2017 )



lacquered  
( cpa.w024.2017 )



lacquered  
( cpa.w025.2017 )

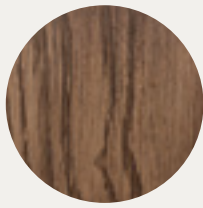
**WOODS**  
WOODS & FINISHES



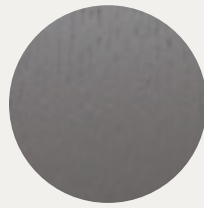
**lacquered**  
( cpa.w026.2017 )



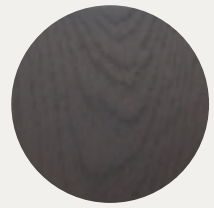
**beech stained**  
( cpa.w027.2017 )



**oak stained**  
( cpa.w028.2017 )



**Oak stained**  
( cpa.w029.2017 )



**Oak stained**  
( cpa.w030.2017 )



**Oak stained**  
( cpa.w031.2017 )



**Oak stained**  
( cpa.w032.2017 )



**METALS**  
MATERIALS & FINISHES



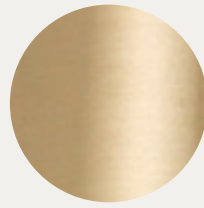
Lab



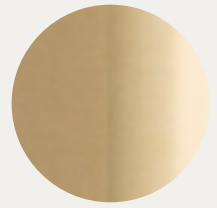
Luso



Lighter bronze



Brushed brass



Brass gold plated



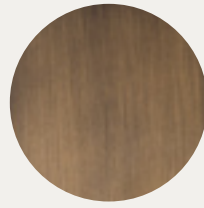
Rose



Polished Copper



Brushed Copper



Oxidated Iron



Nickel

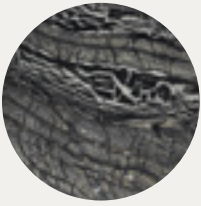


Polished  
Stainless steel



Brushed  
Stainless steel

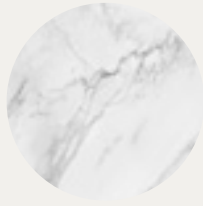
**MARBLE**  
MATERIALS & FINISHES



Black Kenya



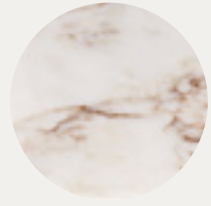
Guatemala Green



Carrara



Black Marquina



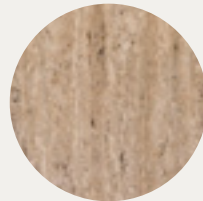
Estremoz



Tiger



Black & Gold



Travertine

Av. Santo António nº67  
4720 - 463 Fiscal  
Amares - Portugal

tel.: +351 253 368 530  
fax.: +351 253 368 531

[info@pauloantunes.net](mailto:info@pauloantunes.net)  
[www.pauloantunes.net](http://www.pauloantunes.net)



pauloantunesfurniture





